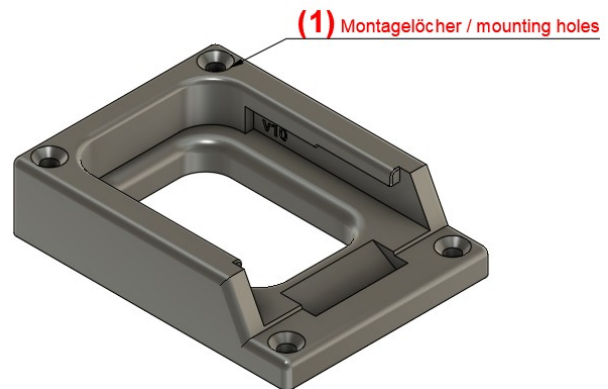
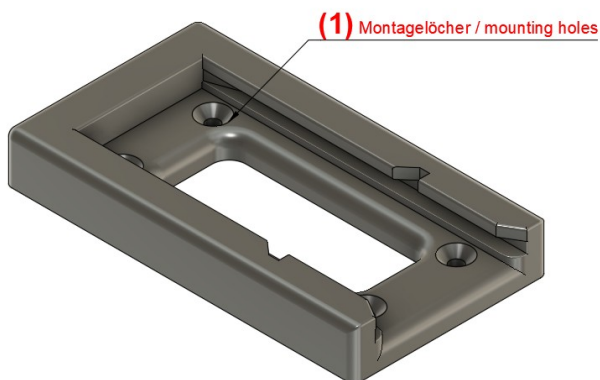


PALO - Design Akkuhalter.de

operating instructions

This manual is valid for the following battery holder series:

	Partnumber
Aldi Ferrex 20-40V	110024
Bosch GBA	110010
Bosch PBA	110036
Einhell X-Change	110014
HiKOKI	110112
Hilti B12	110099
Hilti B22 und B36	110003, 110069
Hilti B22 Nuron	110086
Dewalt	110054
Lidl X20V	110042
Lux AK-20	110077
Makita BL10xx	110050
Makita BL14xx / BL18xx	110005, 110053
Metabo 18V/36V	110062, 110063
Milwaukee M18	110011
Milwaukee M28	110065
Powerworks	110097
Worx	110098



example Pictures

PALO – Design Akkuhalter.de

1. Intended Use

This adapter is intended only as a backup power supply for electrical devices such as:

- lamps or lighting
- radios
- ...

2. General safety instructions

- Do not use outdoors, avoid moisture and high temperatures.
- Only use the holder with the intended battery model.
- Do not use the device if it is damaged or cracked.
- Modifications to electrical devices may only be carried out by qualified personnel.
- **Improper use may cause damage.**

3. commissioning / installation

- The adapter is attached using screws in the mounting holes provided (1).

4. use

- Insert your battery into the battery holder until it clicks firmly into place.
- The battery is now firmly secured to the holder.
- The battery can be removed again by pressing the release button.

5. disposal

- Please dispose of this product after use in accordance with the laws in your country .

